



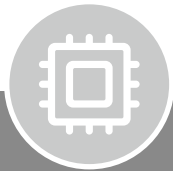
JINPAT SLIP
RING APPLICATION

ROBOTICS



Technical Capacity

Electric



Max.500 circuits



Max.4200A



Max 10,000V



Advantage



USB3.0,10G Ethernet, HDMI, SDI,
ProfNet, Powerlink, SercosIII,
EtherCAT, Encoder, EtherNet/IP...

Environment



Max.IP68



Air 7.5kPa(18000m)
Underwater 4000m



Exd IIB T4 GB



Accelerate 18000g



-55 °C ~+250 °C

Structure



Max.30,000rpm



370million revolutions
2.3@2000rpm



Torque
Min. 0.02 N.m



ID Max. 1m



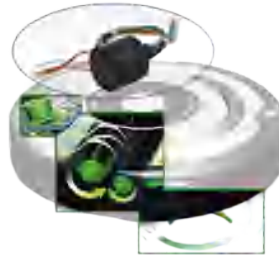
Advantage

Integration :
power+liquid+HF+FO

Typical applications



Accompanying Robot



Cleaning Robot



Cooperative Robot



Exploration and
Detection Robot
(Pipeline Detection, Nucleic Acid, Underwater)



Minesweeping Robot



Anti-Terrorism and
Anti-Explosion Robot

Underwater Robot

SOLUTIONS

- LPC-0206-IP68

TECHNICAL FEATURES

2-circuit * 6A, working voltage: 240VAC/DC

IP68 (100 meters deep water)

Lifespan: ≥ 10 million revolutions





SOLUTIONS

- LPS-0705
- LPS-15-0602

TECHNICAL FEATURES

Plug-in structure (separator and stator separation), suitable for different functional applica-

The contact uses a snap-action structure, ensuring stable and reliable connection

Strong vibration resistance, impact resistance $\leq 40G$

Large current-carrying current, 7 channels 5A, customized $\geq 50A$





SOLUTIONS

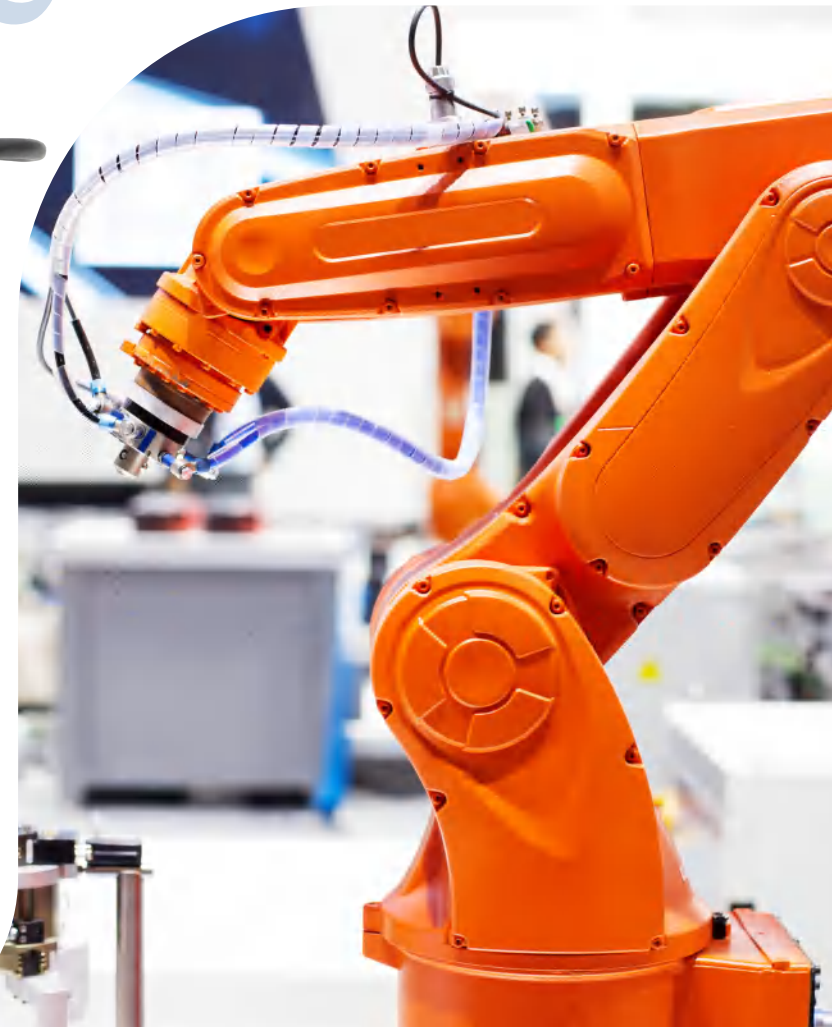
- LPT080-0220-05S-01A
- LPT000-1610-2E2-1A
- LPT000-0415-0802-E2-01A

TECHNICAL FEATURES

Power and signal compatible design and integrated gas

Meet various fieldbus signals, CC-Link, servo motor power, compressed air transmission

High accuracy, transmission stability, long life and customizability



Minesweeping Robot



SOLUTIONS

- LPM-18C-0902-05S-HD01

TECHNICAL FEATURES

The standard products are restructured to work with the customer's equipment in a special environment, with high accuracy, and can effectively identify specific markers

Copper ring and brush wire clamp design, consistent brush pressure and reliable contact

Video integrated serial port signal, precious metal material, stable performance, smooth operation



Anti-terrorism and Anti-riot Robot



SOLUTIONS

- LPT030-0305-17S

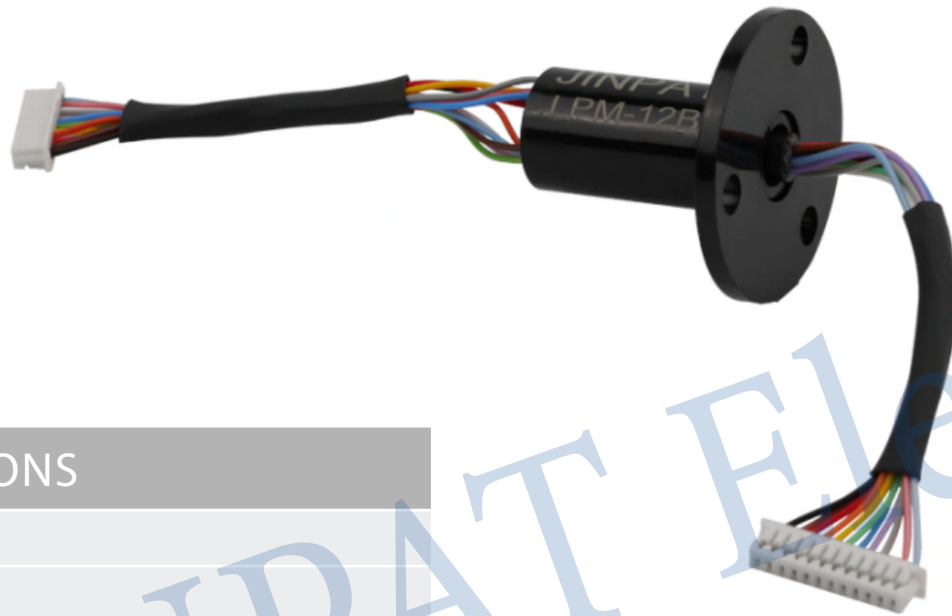
TECHNICAL FEATURES

Precise transmission of metal-to-metal contact signal, power and signal compatible design

Anti-shock, military coating technology, precious metal contact, long lifespan and maintenance-free (up to 200 million revolutions)



Pipeline Detection Robot



SOLUTIONS

- LPM-12B
- LPMS-04C

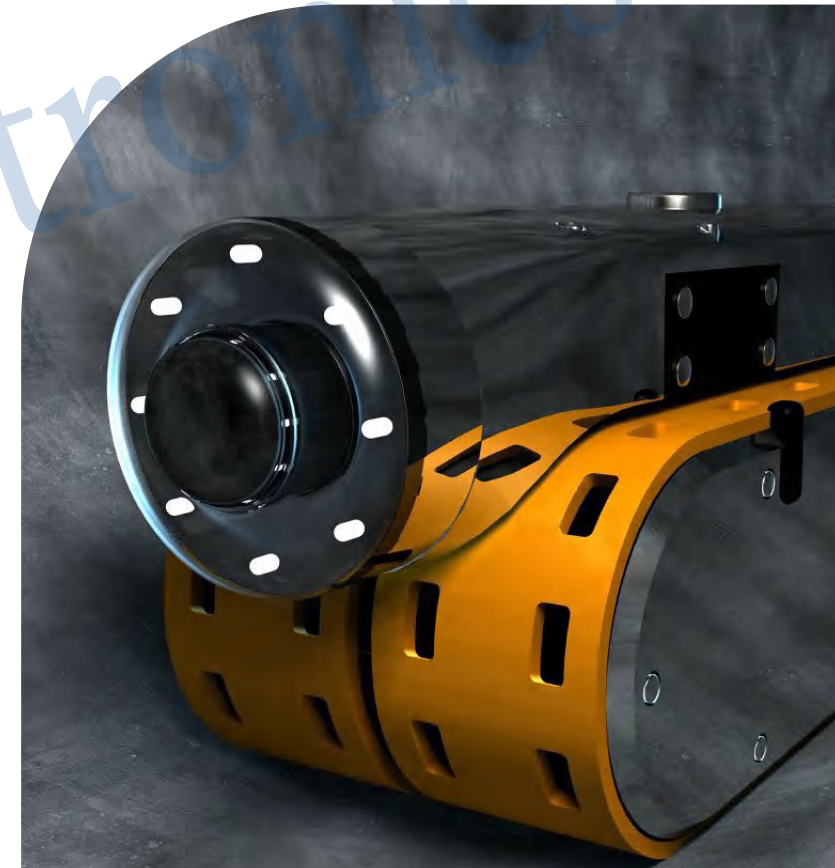
TECHNICAL FEATURES

Small size (the min. outer diameter can be

Stable performance, high precision bearing, smooth and quiet operation

The signal such as video and network signal can be modified to meet the special requirements of high and low temperature resistance, without packet loss and low bit error rate

Long-life maintenance-free





SOLUTIONS

- LPM-04A
- LPMS-05D
- LPM-0210-0102-02E2-09S

TECHNICAL FEATURES

Low torque ($\leq 0.88\text{g} \cdot \text{m}$) standard flange is accurately installed and positioned, and the line length can be customized

Precious metal contact, extremely low contact resistance and stable fluctuation value (up to $1\text{m} \Omega$ at least), suitable for weak current and signal



Sweeping Robot

SOLUTIONS

- LPC-06AU
- LPM-04B(0)

TECHNICAL FEATURES

Ultra-hard gold-plated treatment ensures extremely low resistance fluctuation and long service life

Low torque (3gf * cm), low loss, maintenance-free

Stable signal transmission, perfect for emergency stop and emergency start

Smooth and quiet operation

The stator wire is pulled out from the side/the cap screw is positioned through the hole, and a stop is added to facilitate the connection of the customer's equipment

Ultra-hard gold-plated treatment ensures extremely low resistance fluctuation and long lifespan





SOLUTIONS

- LPM-D15-0602(JP13-384-01)
- LPS-04
- LPM-08B-0404(JP37-019-01HW)

TECHNICAL FEATURES

Smooth operation and small dynamic resistance fluctuation can transmit control signals

Torque: $\leq 0.88g \cdot m$

Small size, light structure, easy installation in narrow ball machine space



Nucleic Acid Detection Robot



SOLUTIONS

- LPM-18F
- LPC-15B

TECHNICAL FEATURES

Outer diameter 12.5mm ~ 54mm; Current 1A~10A, voltage 100V~380V, etc. are optional

The minimum fluctuation value can reach 10m Ω

The working temperature can be customized from -60 $^{\circ}\text{C}$ to +300 $^{\circ}\text{C}$, the working speed can be selected from 1 to 6000 rpm, and the lifespan can reach 8 million to 260 million revolutions

The slip ring shape, outlet mode, shell material, etc. are optional. It can be integrated with bendable controllable data signal transmission, serial port simulation and other signals, with smooth operation and stable performance



3D Scanning Arm



SOLUTIONS

- LPC-24A-2002-E2
- LPM-18C-1401-E2
- LPM-18C-10S-E3

TECHNICAL FEATURES

Integrated Ethernet, stable signal transmission and performance

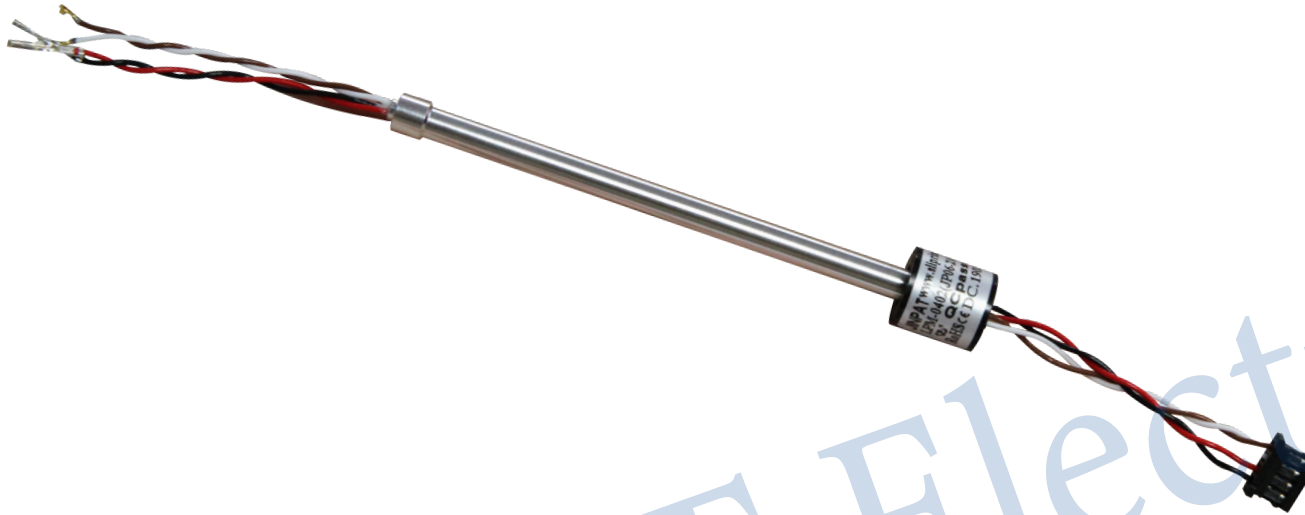
Power and signal compatible design

Long lifespan

The standard product is restructured with compact structure and high adaptability



Cooperative Manipulator (Cooperative Robot)



SOLUTIONS

- LPT009-0203-0202-085
- LPM-0402

TECHNICAL FEATURES

Ethernet and other multiple signals can be integrated for stable transmission

Power and signal compatible design can be customized according to customer requirements

Smooth, quiet and reliable operation

